

Actin

Catalog Number: 21011

Gene Symbol: ACTB

Description: Anti- β -actin Rabbit Polyclonal Antibody

Background: Actin is expressed in all eukaryotic cells and is the major component of the cytoskeleton. At least six types of actin are present in mammalian tissues and fall into three classes. α -actin expression is limited to various types of muscle, and it regulates contractile potentials for the muscle cells, whereas β and γ actins, also known as cytoplasmic actins, are predominantly expressed in non-muscle cells, controlling cell structure and motility.

Immunogen: Synthetic peptide from the N-terminal of β -actin

Tested Applications: ELISA, WB, IHC

Recommended Dilutions:

| | |
|-------|---------------|
| ELISA | 1:1000-1:5000 |
| WB | 1:100-1:2000 |
| IHC | 1:50-1:100 |

Concentration: 0.2 mg/ml

Host: Rabbit

Clonality: Polyclonal

Purity: Purified from serum

Format: Liquid

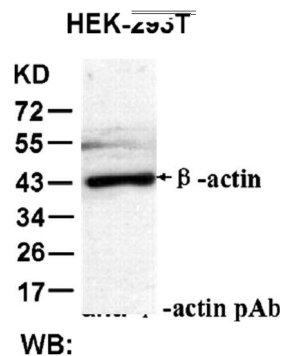
Preservative: No

Constituents: PBS (without Mg^{2+} and Ca^{2+}), pH7.4, 150 mM NaCl, 50% glycerol

Species Reactivity: Anti- β -actin antibody recognizes β -actin of vertebrates and invertebrates

Storage Conditions: Store at $-20^{\circ}C$. Avoid freeze/thaw cycles

Western Blot:



HEK-293T whole-cell lysate was used for Western blot with anti- β -actin polyclonal antibody (Cat. # 21011).

FOR RESEARCH USE ONLY. NOT FOR DIAGNOSTIC APPLICATIONS